

# For lease

## Administration Building, Ground Floor - Office H



### Flexible office space available now







Available immediately, this tenancy is afforded with a practical and flexible layout that consists of open plan and partitioned office space, complemented with meeting rooms and utility space.

Excellent natural light penetrates the tenancy with the entrance located immediately to the left of the building's main entrance. Depending on layout, it could accommodate 30 or more people. Limited on-site parking is available for occupiers.

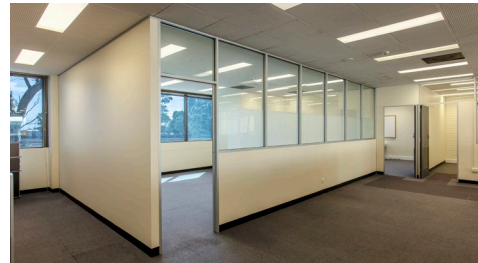
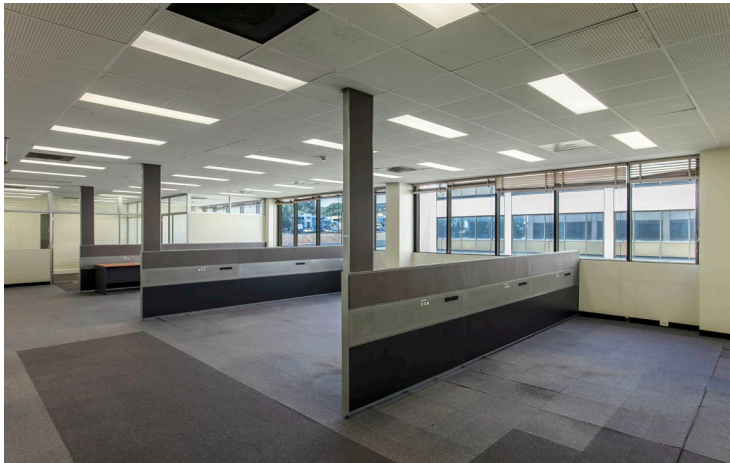
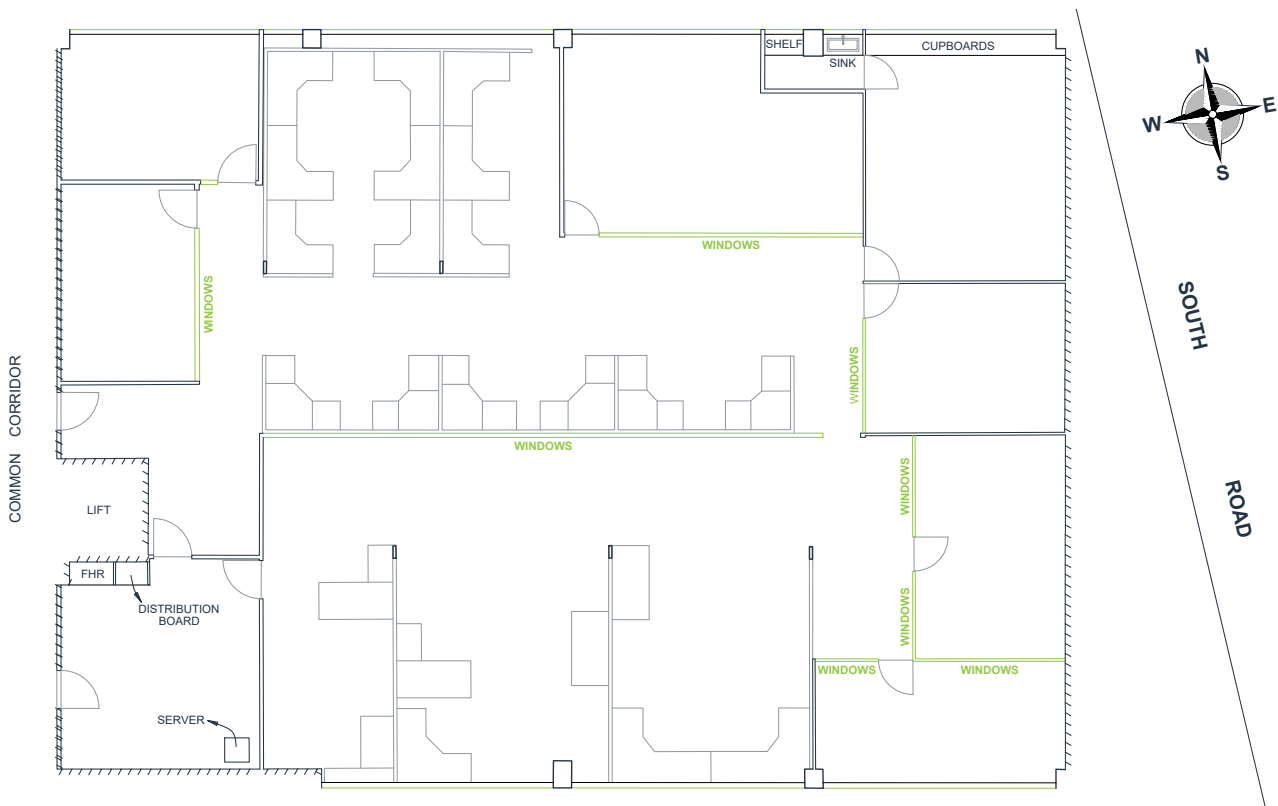
The Administration Building recently became a vibrant and highly visible art piece with a large captivating mural painted on its eastern walls and seen from South Road.

Joining Tonsley will allow you and your organisation to be amongst and collaborate with leading and globally-recognised businesses, research institutions and training providers, such as SAGE Group, Siemens Energy, ZEISS, Tesla, Micro-X, as well as Flinders University and TAFE SA.

### 441m<sup>2</sup>

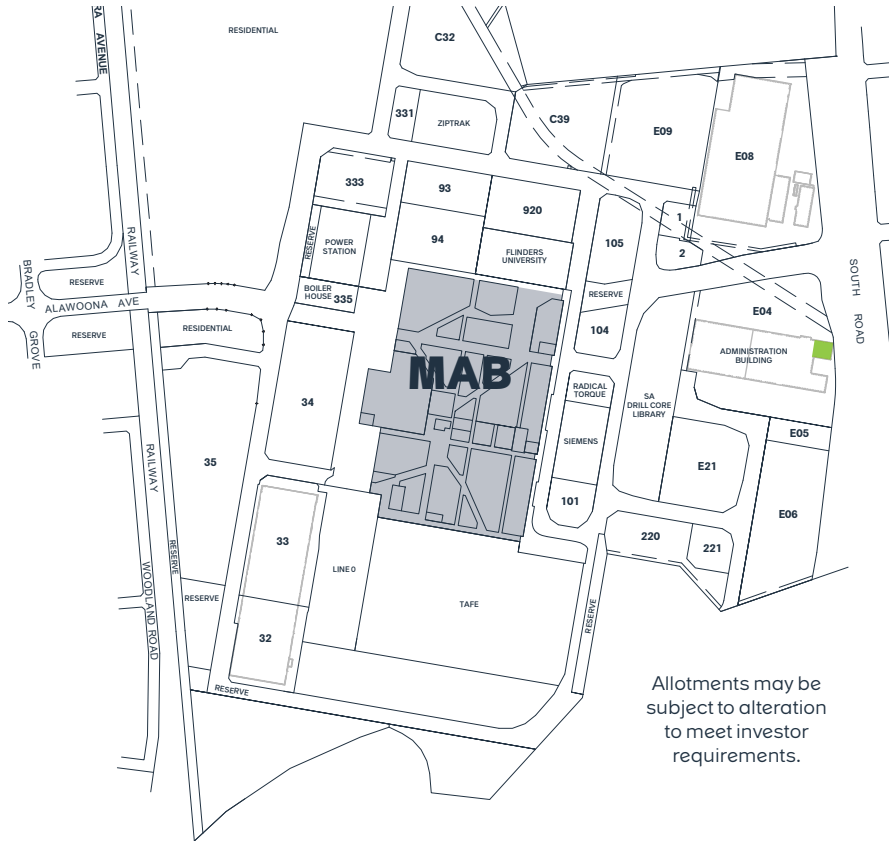
-  Ground Floor, Administration Building, 1 Tonsley Boulevard, Tonsley SA 5042.
-  Available now for lease.
-  Limited on-site parking available.
-  Convenient location off South Road.
-  Suitable for 30 people or staff.
-  3.5 Star NABERS Energy Rating

**Tonsley**  
Innovation District



**Tonsley**  
Innovation District





Allotments may be subject to alteration to meet investor requirements.



Think together.  
Thrive together.

[tonsley.com/join](https://tonsley.com/join)

invest@tonsley.com  
1300 663 707

Last updated: July 2023

RenewalSA



## Suitability assessment

Tonsley has a business suitability policy that reflects Tonsley's economic development objectives. Businesses interested in locating at Tonsley should demonstrate that they are aligned within the realm of high-value manufacturing or Tonsley's four focus sectors. There are also exemptions from the suitability criteria that some businesses may meet.

The suitability assessment will be administered following receipt of your enquiry.



**Michael Pfitzner**  
michael.pfitzner@cbre.com.au  
+61 408 807 823

**Chris Lucas**  
chris.lucas@cbre.com.au  
+61 412 191 311